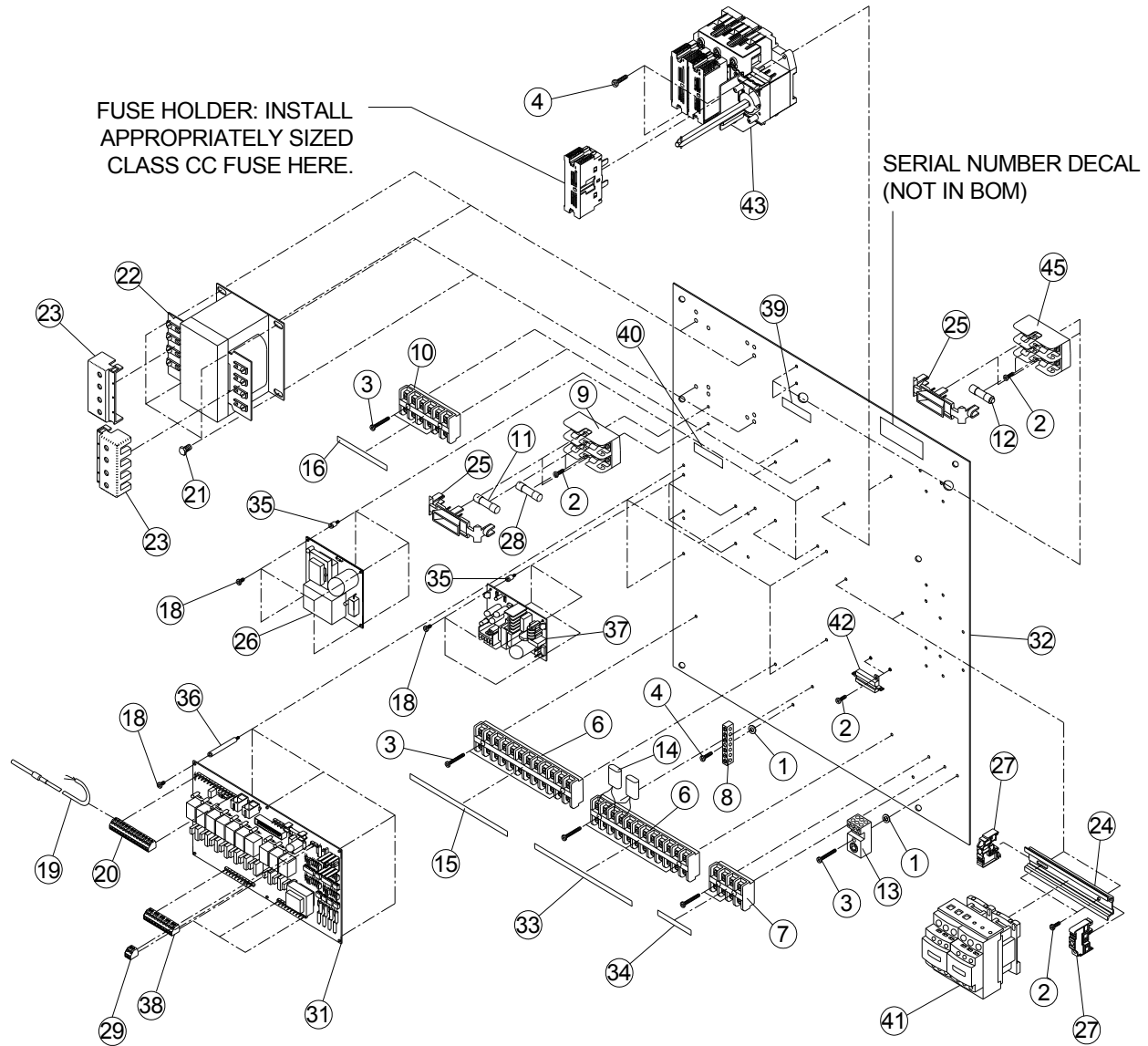


# Main Panels

## Back Panel Assembly for 16-0066-1, CE





# Main Panels

## Back Panel Assembly for 16-0066-1, CE, continued

Ref.	Original Part No.	Substitute Part No.	Description
1	06-0844-8		Washer, Lock, 1/4", I-Tooth
2	06-0847-1		Screw, #8-32 x 3/8", Ph. Pn Hd,#23
3	06-0850-5		Screw, #8-32 x 1", Ph. Pan Hd, #23
4	06-4553-1		Screw, #8-32 x 3/4",Ph. Pn Hd, #23
5	09-0824-4		Base, Wire Tie Support
6	09-7602-7		Block, Term., 12 Pt, CR151B26AF
7	09-7604-3		Block, Term., 4 Pt. CR151BA46AF
8	09-7631-6		Bar, Ground Terminal, 6-#14, 6-#8
9	09-8870-9		Fuseholder, 600V, 30A, 2 Pole
10	09-9059-8		Block, Terminal, 6 Pt. #CR151B66
11	09-9064-8		Fuse, 5 AMP, 500 Volt, DETD
12	14-8903-0	1600469	Fuse, 1.25 AMP, 600 VAC, Class CC
13	14-8356-0		Terminal, Lug, 2#2/0, 6#4-14
14	14-8934-0		Snubber, RC, 250 VAC, CE
15	10-9224-6		Decal, Term., Marker, Aux.
16	10-9319-4		Decal, Term. Marker, 12V
17	10-9672-6		Nut, #4-40, Hex
18	11-0707-7		Screw, #4-40 x 1/4", Sl. Pan Head
19	11-0525-3		Sensor, Temperature, Monitor
20	11-0954-5		Connector, Plug, 5 MM, 14 Pos.
21	11-3062-4		Screw, 1/4-20 x 3/8", Hex, Typ.#23
22	11-5015-0	1600227	Transformer, 380V, 5 KVA, CE
23	11-5016-8		Cover, Transformer Terminal
24	11-6044-9		Rail, Din, 5.875"
25	11-7352-5		Cover, Fuse Holder, CE
26	11-7465-5		Board, PC, 2 Second Delay
27	11-7467-1		Rail, Din, End
28	11-7487-9		Fuse, 1.25 AMP, 500V, DETD
29	11-7722-9		Connector, Plug, 5 MM 2 Position
30	11-7754-2		Washer, Lock, #4, I-Tooth
31	11-7776-5		Board, PC, Relay, BOSS
32	11-7805-2		Panel, Back, 2001
33	11-7832-6		Decal, Term. Marker, BOSS
34	11-7833-4		Decal, Terminal, Marker, 480
35	11-7862-3		Spacer, Male/Female, .25 Hex 4-40
36	11-7863-1		Spacer, Male/Female, 2" Hex 4-40
37	11-7897-9		Power Supply, BOSS Assy
38	11-8276-5		Connector, Plug, 5 MM, 10 Position
39	14-8905-0	1600312	Decal, Fuse, Size (2) - 1.25 AMP, CC
40	11-8331-1		Decal, Fuse, Size, 1.25-5 AMP
41	11-8921-0		Contact, 3P, Rev, MI, w/Aux.
42	12-1512-0		Resistor Assy, 2K, 25W
43	1602086		Disconnect (KIT), IEC 1600943
44	15-0305-0		Ferrite, Clamp, Ring, 0461164181
45	12-6800-0		Fuseholder, 600V, 30A, 2 Pole