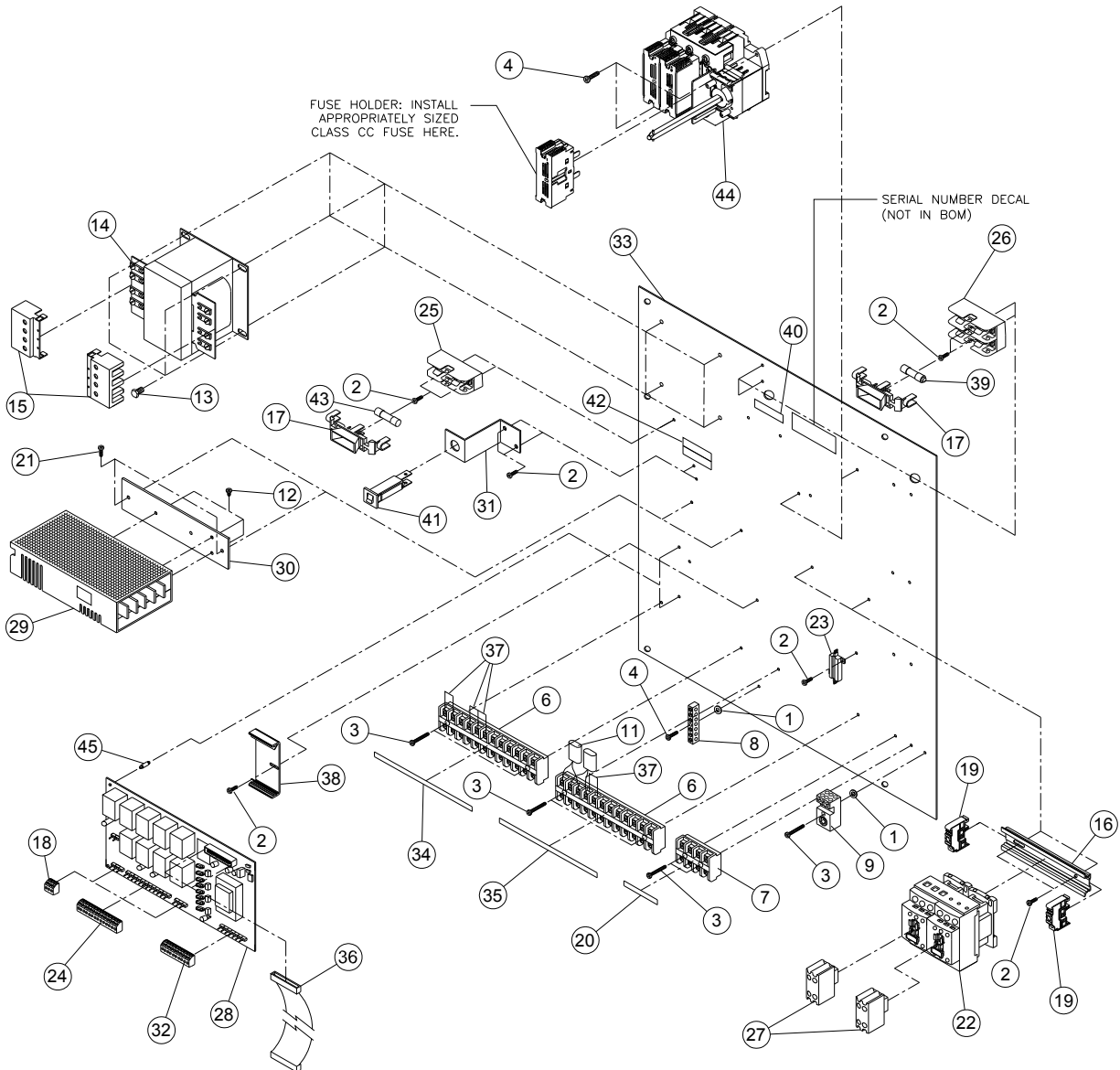


# Main Panels

## Back Panel for VISION, 380V, CE, 16-0063-1





# Main Panels

## Back Panel for VISION, 380V, CE, 16-0063-1

Ref.	Original Part No.	Substitute Part No.	Description
1	06-0844-8		Washer, Lock, 1/4", I-Tooth
2	06-0847-1		Screw, #8-32 x 3/8", Ph. Pn Hd,#23
3	06-0850-5		Screw, #8-32 x 1", Ph. Pan Hd, #23
4	06-4553-1		Screw, #8-32 x 3/4", Ph. Pan Hd, #23
5	09-0824-4		Base, Wire Tie Support
6	09-7602-7		Block, Term., 12 Pt, CR151B26AF
7	09-7604-3		Block, Term., 4 Pt. CR151BA46AF
8	09-7631-6		Bar, Ground Terminal, 6-#14, 6-#8
9	14-8356-0		Terminal, Lug, 2#2/0, 4#4-14, #10
10	09-9211-5		Term. Slip-On, 16-14-1/4" Ful. Ins.
11	14-8934-0		Snubber, RC, 250 VAC, CE
12	11-0707-7		Screw, #4-40-1/4", Sl. Pn. Hd.
13	11-3062-4		Screw, 1/4-20 x 3/8" Hex, Type 23
14	11-5015-0	1600227	Transformer, 380, 0.5KVA, CE
15	11-5016-8		Cover, Transformer, Term,9070FS
16	11-6044-9		Rail Din, 5.875"
17	11-7352-5		Cover, Fuseholder, CE
18	11-7377-2		Connector, Plug, 5MM, 3 Pos.
19	11-7467-1		Rail, Din, End
20	11-7833-4		Decal, Terminal Marker
21	11-8334-8		Screw, #8-32 x 1/2", Ph. Pn. Hd.#23
22	11-8921-0		Contact, 3P Rev, w/Aux
23	12-1512-0		Resistor Assy, 2K, 25W
24	12-4012-0		Connector, Plug, 5 MM, 12 Pos.
25	12-6396-0		Fuseholder, 600V, 30A, 1 Pole
26	12-6800-0		Fuseholder, 600V, 30 AMP, 2 Pole
27	13-2104-0		Contact, Aux. Sq. D, LADN11
28	13-3524-0		Board, PC, Relay, VISION
29	13-3528-0		Power Supply, 12V, 50W, SWS
30	13-3635-0		Bracket, SWS PS Mounting
31	13-3637-0		Bracket, Circuit Break Mount
32	13-3707-0		Connector, Plug, 5MM, 7 Position
33	13-3773-0		Panel, Back, VISION
34	13-3837-0		Decal, Term. Marker, VISION-1
35	13-3838-0		Decal, Term. Marker, VISION-2
36	13-3860-0		Cable, Ribbon, 29", 26 Cond.
37	13-4007-0		Term. Block, ACC, Jumper, CR151
38	13-4103-0		Snaptrack, 4" x 2"
39	14-8903-0	1600469	Fuse, 1.25 Amp, 600 VAC, Class CC
40	14-8905-0	1600312	Decal, Fuse Size (2) 1.25 AMP, CC
41	13-5854-0		Breaker, Thermal Circuit, 4 AMP
42	13-5855-0		Decal, Fuse Size 1.0, 4 AMP CB
43	13-5856-0		Fuse, 1.0, AMP, 600V, Fast Blow
44	1602086		Disconnect, (KIT) ICE, 1600943
45	14-3300-0		Spacer, Plastic, Lock, 0.375x0.125D
46	15-0305-0		Ferrite, Clamp, Ring, 0461164181