

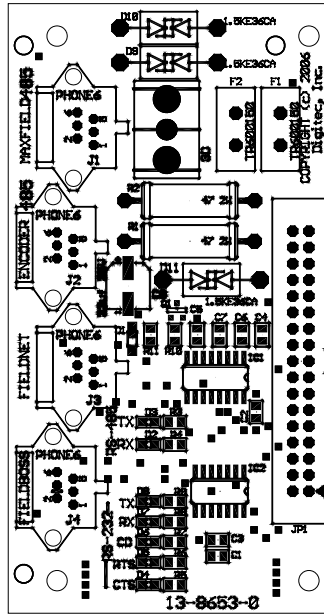


# Main Panels

## Board, BOSS, Com, 232, 485, Encoder, 13-8653-0

2, 2, 3, 75

- MAXfield 485 port \_\_\_\_\_
- ENCODER 485 port \_\_\_\_\_
- FieldBOSS 232 port \_\_\_\_\_
- FieldNET 232 port \_\_\_\_\_



Ref.	Original Part No.	Substitute Part No.	Description
1	13-8653-0		Board, BOSS, Com, 232, 485, Encoder

## Eproms, BOSS

Ref.	Original Part No.	Substitute Part No.	Description
1	12-1464-0		EPROM, BOSS, Demo, 9P, Nulink
2	12-1465-0		EPROM, BOSS, MPVT, 9P, Nulink
3	12-1466-0		EPROM, BOSS, PRPP, 9P, Nulink
4	11-9679-0		EPROM, BOSS, 1024, 9P, Nulink
5	11-1799-3		IC, Multiplexer 4 Channel