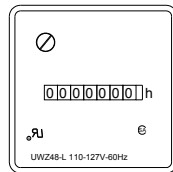


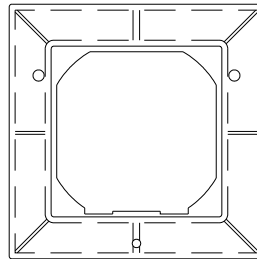


Main Panels

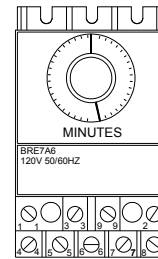
Timer Assemblies



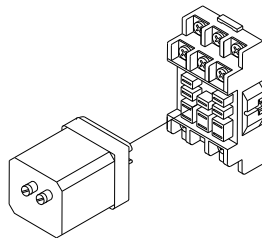
9-9132-3 TIMER, HOURMETER, PANEL MOUNT, W/O BEZEL (FIELD BASIC)



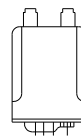
10-9993-6 BEZEL, HOURMETER (FIELD BASIC)



9-7262-0 TIMER, EAGLE SIGNAL, #BR17A6



9-9182-8 SOCKET, 11 BLADE, SQ. SURFACE MNT.
NOTE: USE IN CONJUNCTION WITH PART NO. 9-9181-0 TIMER, DUAL RESTART, 120VAC



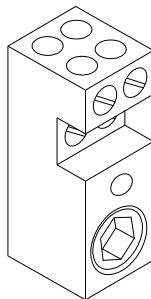
EAGLE SIGNAL



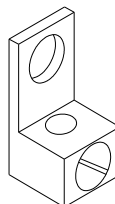
9-9181-0 DUAL RESTART, 120VAC

Ref.	Original Part No.	Substitute Part No.	Description
1	09-9132-3		Timer, Hourmeter, Panel Mount
2	09-9181-0		Dual Restart, 120 VAC
3	09-9182-8		Socket, 11 Blade, Sq. Surface Mnt.
4	09-7261-2		Timer, Internal, 5 Min. Reset
5	09-7262-0		Timer, Eagle Signal (Type B)
6	10-9993-6		Bezel, Hourmeter

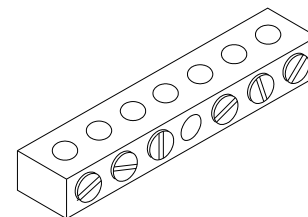
Terminal Lugs



9-9208-1 TERM., LUG, 2-#2/0, 4-#14, #10



9-7618-3 TERM., WIRE LUG, N, #2-14 AWG, 1/4"



9-7631-6 BAR, GROUND TERMINAL, 6-#14, 6-#8

Ref.	Original Part No.	Substitute Part No.	Description
1	09-7618-3		Term., Wire, Lug, N, #2-14, AWG, 1/4"
2	09-7631-6		Bar, Ground Terminal, 6-#14, 6-#8
3	09-9208-1		Term., Lug, 2-#2/0, 4-#14, #10