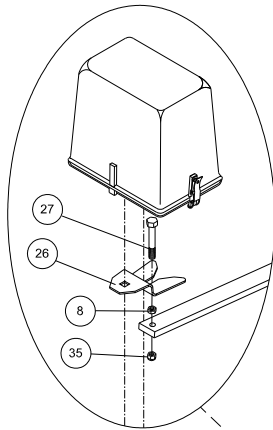


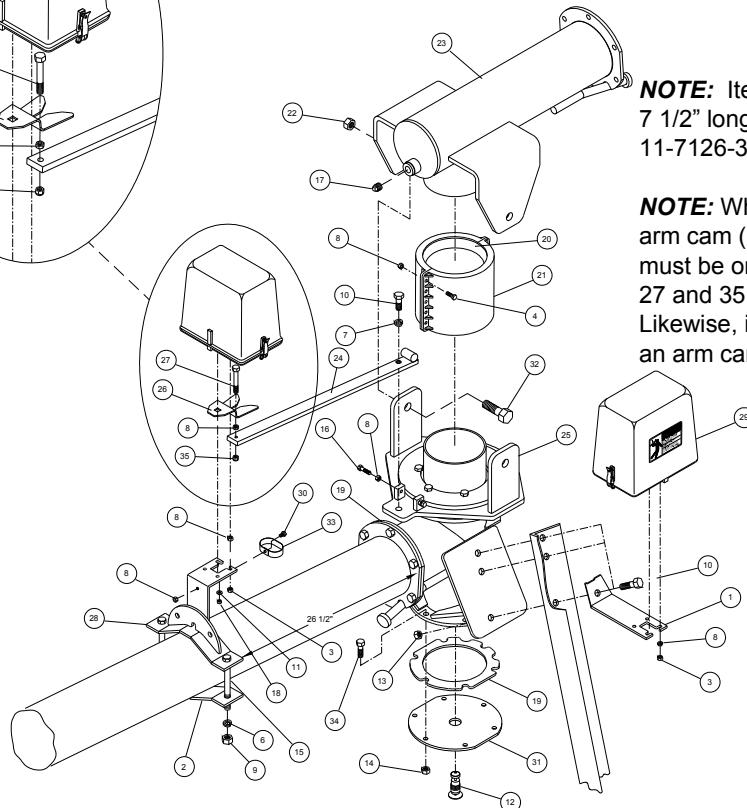


Pivot Joints

Joint Assembly, FieldPLUS



NOTE: Standard tower panel requires switch and modified cam.



NOTE: Item 23, 14-2258-0 is 7 1/2" longer than previous joint, 11-7126-3 (prior to 10-10-08).

NOTE: When ordering a replacement arm cam (Item 26), a new alignment arm must be ordered (Item 24) with Items 8, 27 and 35. Likewise, if an alignment arm is ordered, an arm cam must also be ordered.

NOTE: ADD TOWER TIES PROVIDED

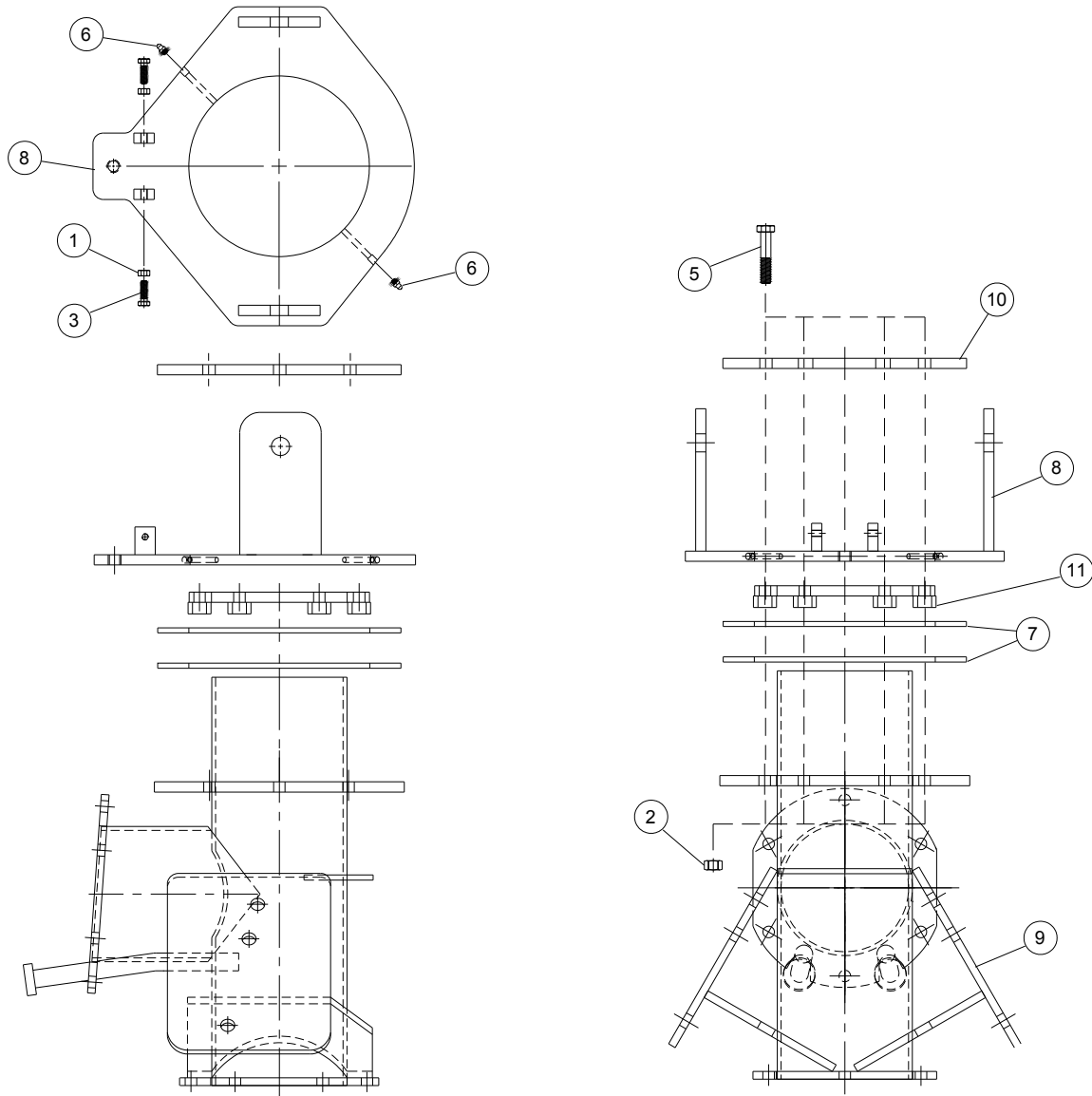
Ref.	Original Part No.	Substitute Part No.	Description
1	04-0900-3		Mount, Booster Pump Panel
2	04-7243-1		Clamp, Saddle, 5-9/16", 6-5/8", 8"
3	06-0262-3		Nut, 5/16-18, Lock, Nylon Insert
4	06-0802-6		Screw, 5/16-18 x 1", Hex,
5	06-0812-5		Washer, Lock, 5/16"
6	06-0814-1		Washer, Lock, 1/2"
7	06-0815-8		Washer, Lock, 5/8"
8	06-0822-4		Nut, 5/16-18, Hex
9	06-0824-0		Nut, 1/2-13, Hex
10	06-0839-8		Screw, 5/8-11 x 1-1/2", Hex, Gr. 5
11	06-0842-2		Washer, Flat, 1/4"
12	06-2070-8		Valve, Drain, 1"
13	06-2416-3		Nut, 5/8-11, Lock
14	06-2418-9		Nut, 1/2-13, Lock
15	06-3070-7		Screw, 1/2-13 x 5-1/2", Hex, Gr. 5
16	06-3358-6		Screw, 5/16-18 x 1-1/4", Hex, Gr. 5
17	06-3875-9		Plug, Pipe, Sq. Head, 1", Black
18	06-4267-8		Nut, 1/4-20, Lock, Nylon Insert

Ref.	Original Part No.	Substitute Part No.	Description
19	06-4486-4		Gasket, Flange, 6-5/8" Pipe
20	06-4490-6		Gasket, Boot, Zim, 6-5/8" x 7.12", Lg
21	06-4491-4		Coupler Half, 6-5/8" x 7-1/2" Long
22	11-0024-7		Nut, 7/8-9, Lock, Nylon Insert
23	14-2258-0		Joint, Pivot End, Piv. Twr., Style 2
24	11-7131-3		Arm, Alignment, Pivoting Tower
25	11-7156-0		Joint Assembly, Pivoting Tower
26	14-3736-0		Arm, Cam, Field + Tower Panel
27	11-4322-1		Screw, 5/16-18x3, HX, GR5, ZP
28	11-7316-0		Bracket, Weldment, Panel
29	11-7931-6		Panel, Junction, Pivoting Tower
30	12-0249-0		Screw, 5/16-18 x 1/2", Hex, Gr. 5
31	12-1695-0		Cap Weldment w/1" Coupling
32	12-2404-0		Screw, 7/8-9 x 2-1/4", Hex, Gr. 5
33	13-8456-0		Spring, Cam, FieldPLUS
34	26-0760-4		Screw, 1/2-13 x 1-1/2", Hex, Gr. 5
35	06-4364-3		Nut, 5/16-18, Lock



Pivot Joints

Joint Assembly, FieldPLUS



Ref.	Original Part No.	Substitute Part No.	Description
1	06-0822-4		Nut, 5/16-18", Hex
2	06-2418-9		Nut, Lock, 1/2-13
3	06-3358-6		Screw, 5/16-18 x 1-1/4", Hex, Gr. 5
4	10-3135-0		JD, Grease, Multi-Purpose
5	10-5771-0		Screw, 1/2-13 x 3", Hex, Gr. 8
6	11-0470-2		Zerk, 5/16", Drive-In
7	11-7139-6		Bearing, Joint Assembly
8	11-7141-2		Coupler Bar Weldment, Vertical
9	11-7145-3		Joint Weldment, Pivoting Tower
10	11-7148-7		Plate, Holding
11	12-2781-0		Weldment, Centering Flange