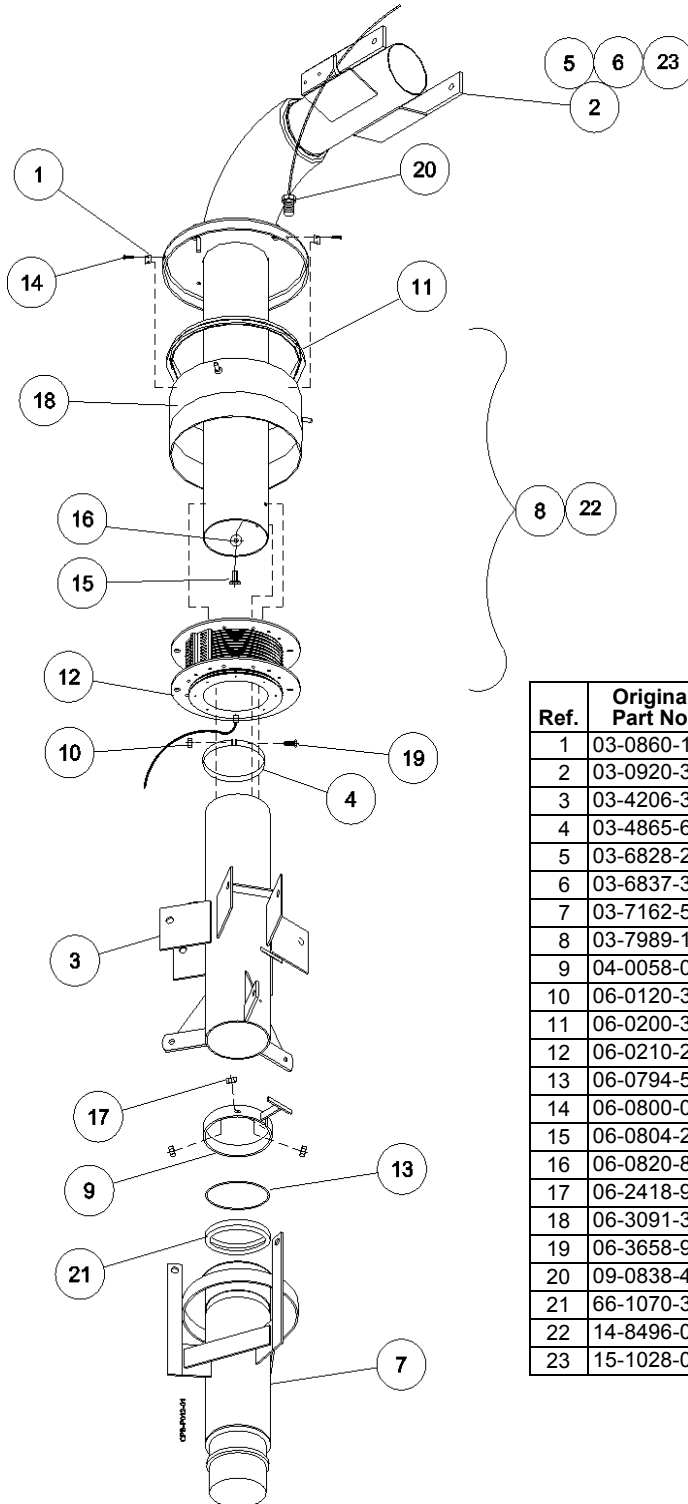


9500MP

9500MP Head Assembly



| Ref. | Original Part No. | Substitute Part No. | Description |
|------|-------------------|---------------------|---------------------------------------|
| 1 | 03-0860-1 | | Bracket, Collector Ring Shield Holder |
| 2 | 03-0920-3 | | Elbow Weldment, Pivot, 6-5/8" |
| 3 | 03-4206-3 | | Head Weldment, Mobile Pivot |
| 4 | 03-4865-6 | | Band, Collector Ring |
| 5 | 03-6828-2 | | Elbow Weldment, Pivot, 5-9/16" |
| 6 | 03-6837-3 | | Elbow Weldment, Pivot, 8" |
| 7 | 03-7162-5 | | Riser Weldment, Mobile Pivot |
| 8 | 03-7989-1 | | Ring Assy, Collector |
| 9 | 04-0058-0 | | Bracket, Automatic Shutdown |
| 10 | 06-0120-3 | | Nut, 3/8-16, Hex |
| 11 | 06-0200-3 | | Gasket, Collector Ring, Top |
| 12 | 06-0210-2 | | Gasket, Collector Ring, Bottom |
| 13 | 06-0794-5 | | Gasket, Deflector, 8" |
| 14 | 06-0800-0 | | Screw, 5/16-18 x 3/8", Hex |
| 15 | 06-0804-2 | | Screw, 1/2-13 x 1-1/4" Hex, Gr. 5 |
| 16 | 06-0820-8 | | Washer, 1/2", Rubber Seal |
| 17 | 06-2418-9 | | Nut, 1/2-13, Lock |
| 18 | 06-3091-3 | | Shield, Collector Ring |
| 19 | 06-3658-9 | | Screw, 3/8-16 x 2-1/4", Hex, Gr. 5 |
| 20 | 09-0838-4 | | Connector, 3/4", w/Nut |
| 21 | 66-1070-3 | | Gasket, Round Back |
| 22 | 14-8496-0 | | Ring Assy, Coll., 10 Wire, CE |
| 23 | 15-1028-0 | | Elbow, Weldment, Pivot, 8-5/8" |