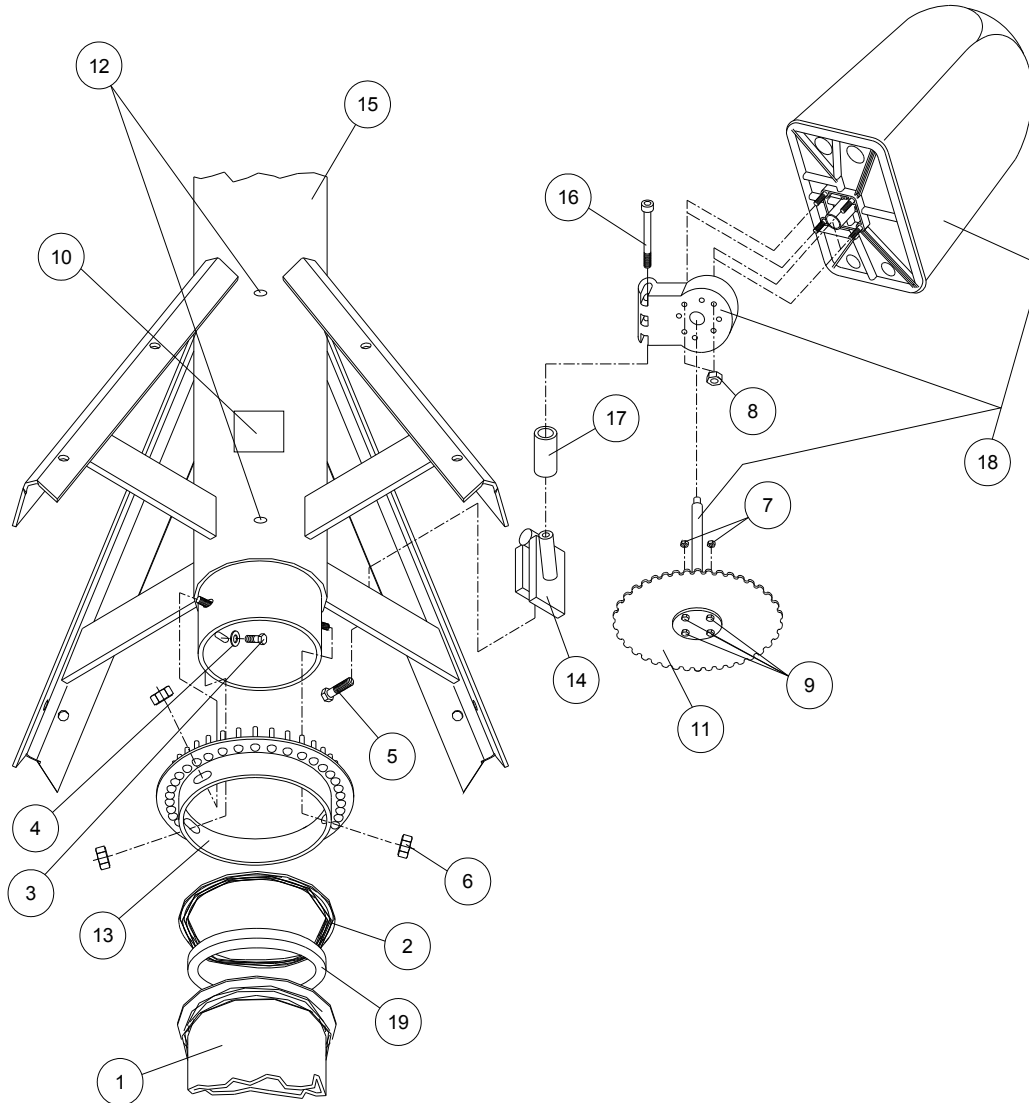


Pivot Points

Encoder Detail, 6-5/8", 5-9/16", Compact Pivot



Ref.	Original Part No.	Substitute Part No.	Description
1	03-0070-7		Riser Weldment, Pivot
2	06-0794-5		Gasket, Deflector
3	06-0804-2		Screw, 1/2-13 x 1-1/4", Hex, Gr. 5
4	06-0820-8		Washer, 1/2", Rubber Seal
5	06-2221-7		Screw, 3/8-16 x 1", Hex, Gr. 5
6	06-2418-9		Nut, 1/2-13, Lock
7	06-4267-8		Nut, 1/4-20, Lock, Nylon Insert
8	06-4364-3		Nut, 5/16", Lock
9	10-2985-9		Screw, 1/4-20 x 3/4", Hex, Gr. 5
10	11-0046-0		Decal, "Grease"

Ref.	Original Part No.	Substitute Part No.	Description
11	11-0362-1		Gear, Encoder Drive, Plated
12	11-0470-2		Zerk, 5/16", Drive-In
13	11-0951-1		Pin, Gear
14	12-9350-0		Mount, Encoder
15	13-5725-0		Head Weldment, Pivot
16	13-6741-0		Screw, 5/8" x 5-1/2", Socket Hd, Ptd
17	13-6914-0		Spacer, Encoder
18	14-3474-0		Encoder Assy, Magnetic, Drive
19	66-1070-3		Gasket, Round Back