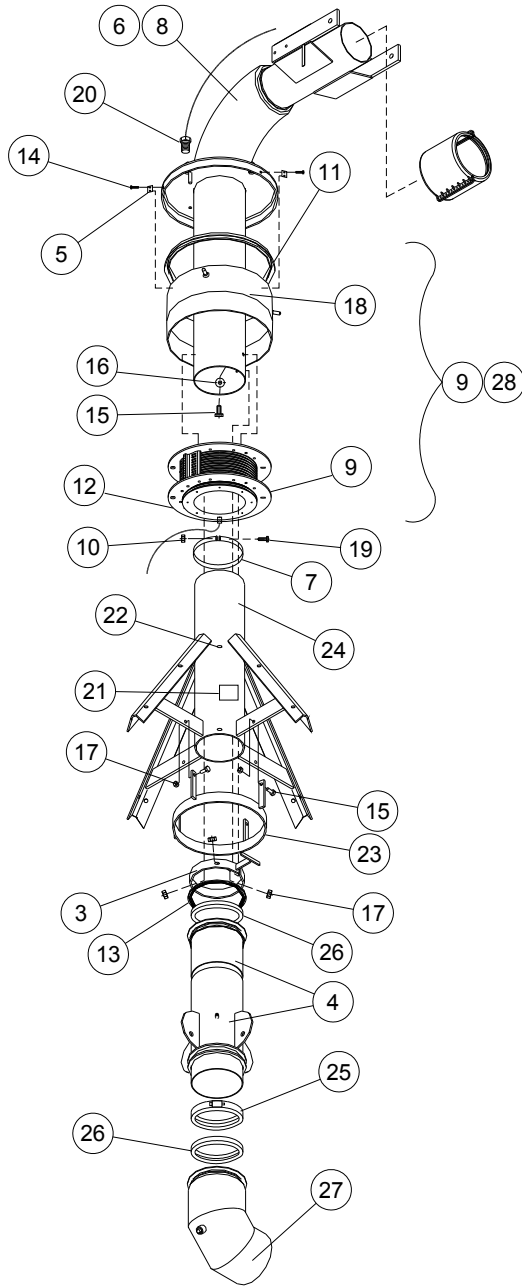




Pivot Points

Elbow Section, 6-5/8", 5-9/16", Compact Pivot



NOTE: Refer to page E-23 for split couplers.

Ref.	Original Part No.	Substitute Part No.	Description
1			Coupler, 6-5/8", Split
2			Coupler, 5-9/16", Split
3	04-0058-0		Bracket, Automatic Shutdown
4	03-0070-7		Riser Weldment, Pivot
5	03-0860-1		Bracket, Collector Ring Shield Holder
6	03-0920-3		Elbow Weldment, Pivot, 6-5/8"
7	03-4865-6		Band, Collector Ring
8	03-6828-2		Elbow Weldment, Pivot, 5-9/16"
9	03-7989-1		Ring Assy, Collector
10	06-0120-3		Nut, 3/8-16, Hex
11	06-0200-3		Gasket, Collector Ring, Top
12	06-0210-2		Gasket, Collector Ring, Bottom
13	06-0794-5		Gasket, Deflector, 8"
14	06-0800-0		Screw, 5/16-18 x 3/8", Hex
15	06-0804-2		Screw, 1/2-13 x 1-1/4", Hex, Gr.5
16	06-0820-8		Washer, 1/2", Rubber Seal
17	06-2418-9		Nut, 1/2-13, Lock
18	06-3091-3		Shield, Collector Ring
19	06-3658-9		Screw, 3/8-16 x 2-1/4", Hex, Gr.5
20	09-0838-4		Connector, 3/4", w/Nut
21	11-0046-0		Decal, "Grease"
22	11-0470-2		Zerk, 5/16", Drive-In
23	11-3279-4		Ring, Shutdown Clamp
24	13-5725-0		Head Weldment, Pivot
25	66-0640-4		Clamp, Ringlock, 8" Steel Coupler
26	66-1070-3		Gasket, Round Back
27	66-2249-2		Elbow, Steel, 8" x 90°
28	14-8496-0		Ring Assy, Coll., 10 Wire, CE

***NOTE:** 11-3279-4 is required when pivot application requires auto-reverse or stop using kit #10-0233-6.