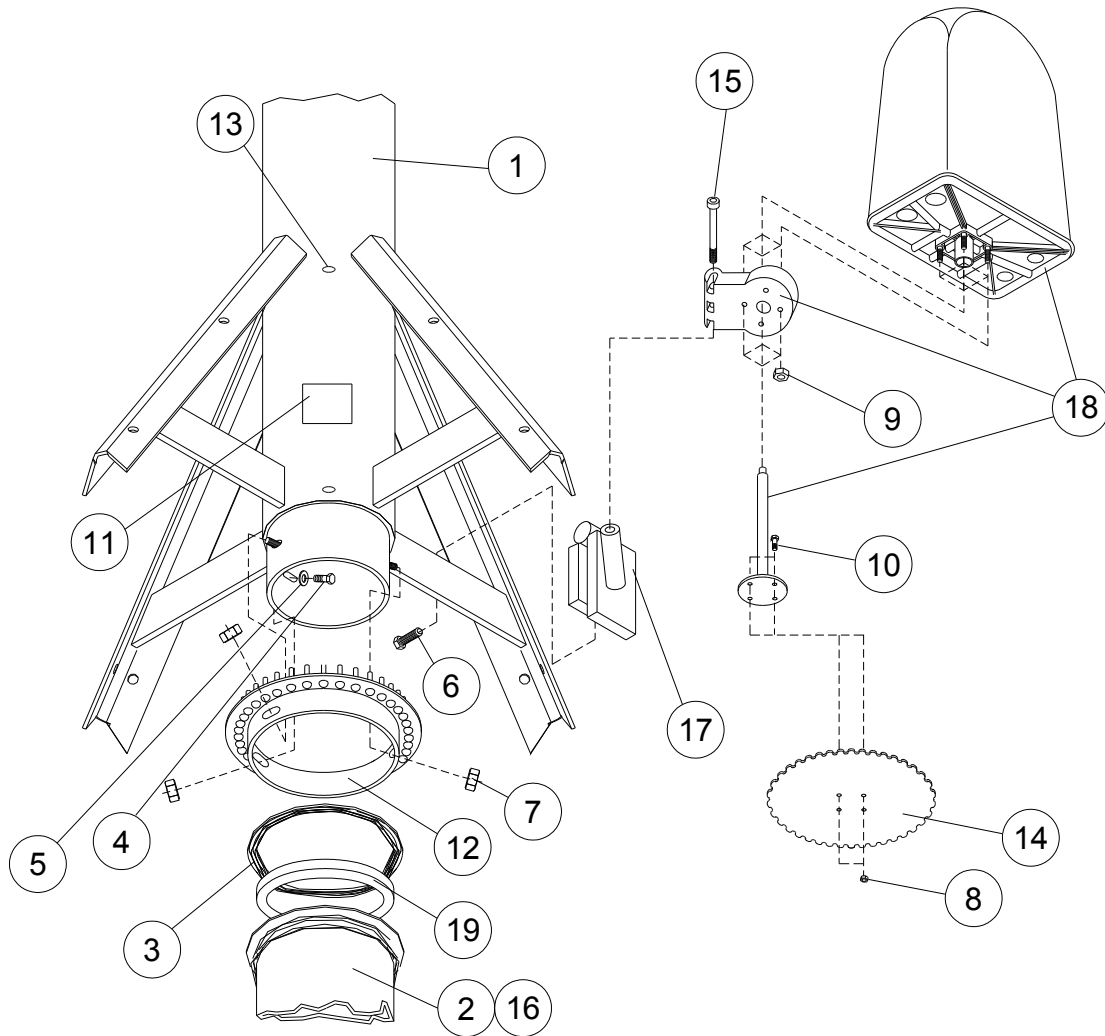


Pivot Points

Encoder Detail, 8", 6-5/8", 5-9/16"



Ref.	Original Part No.	Substitute Part No.	Description
1	03-0030-1		Head Weldment, Pivot
2	03-0070-7		Riser Weldment, Pivot
3	06-0794-5		Gasket, Deflector, 8"
4	06-0804-2		Screw, 1/2-13 x 1-1/4", Hex, Gr. 5
5	06-0820-8		Washer, 1/2" Rubber Seal
6	06-2221-7		Screw, 3/8-16 x 1", Hex, Gr. 5
7	06-2418-9		Nut, 1/2-13, Lock
8	06-4267-8		Nut, 1/4-20, Lock, Nylon Insert
9	06-4364-3		Nut, 5/16", Lock
10	10-2985-9		Screw, 1/4-20 x 3/4", Hex, Gr. 5

Ref.	Original Part No.	Substitute Part No.	Description
11	11-0046-0		Decal, "Grease"
12	11-0334-0		Gear, Pin, 8"
13	11-0470-2		Zerk, 5/16", Drive-In
14	11-6015-9		Gear, 8", 12 Gauge
15	11-6419-3		Screw, 5/8" x 3-1/2", Socket Head
16	11-6659-4		Riser Weldment, 8", Mid-Size
17	12-9350-0		Mount, 8" Encoder
18	13-9490-0		Panel, Assy, Encoder. Mag, Drive
19	66-1070-3		Gasket, Round Back