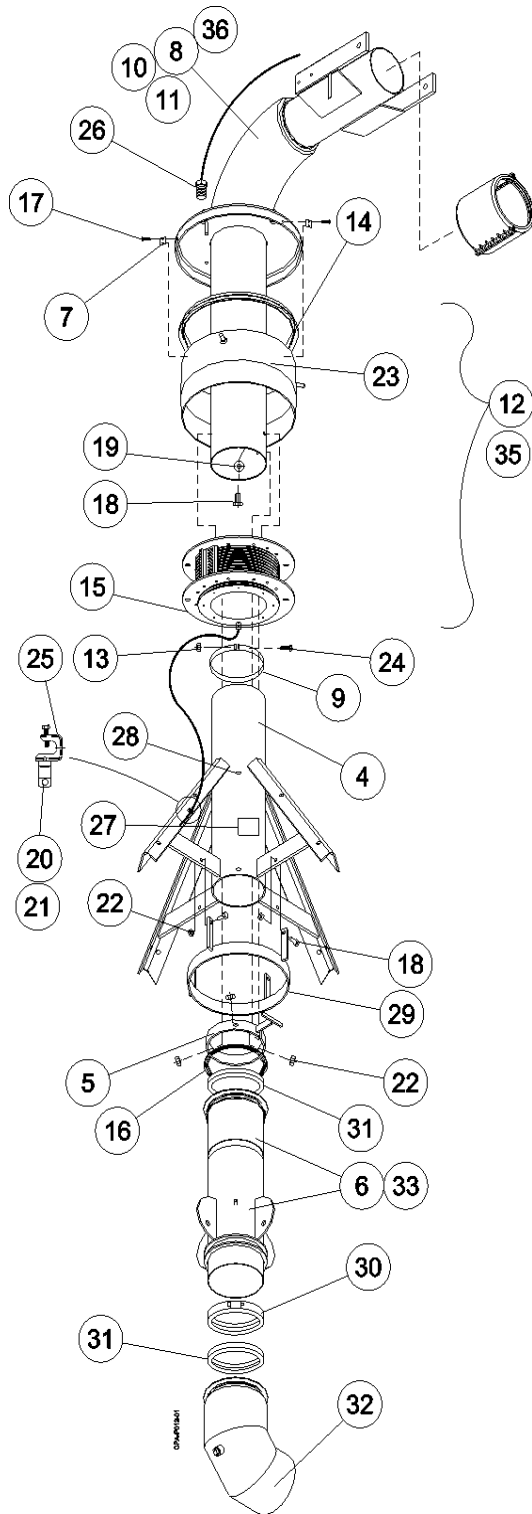




Pivot Points

Elbow Section, 8-5/8", 8", 6-5/8", 5-9/16"



NOTE: Refer to page E-23 for split couplers.

Ref.	Original Part No.	Substitute Part No.	Description
1			Coupler, 6-5/8", Split
2			Coupler, 5-9/16", Split
3			Coupler, 8", Split
4	03-0030-1		Head Weldment, Pivot
5	04-0058-0		Bracket, Automatic Shutdown
6	03-0070-7		Riser Weldment, Pivot
7	03-0860-1		Bracket, Collector Ring Shield Holder
8	03-0920-3		Elbow Weldment, Pivot, 6-5/8"
9	03-4865-6		Band, Collector Ring
10	03-6828-2		Elbow Weldment, Pivot, 5-9/16"
11	03-6837-3		Elbow Weldment, Pivot, 8"
12	03-7989-1		Ring Assy, Collector
13	06-0120-3		Nut, 3/8-16, Hex
14	06-0200-3		Gasket, Collector Ring, Top
15	06-0210-2		Gasket, Collector Ring, Bottom
16	06-0794-5		Gasket, Deflector, 8"
17	06-0800-0		Screw, 5/16-18 x 3/8", Hex
18	06-0804-2		Screw, 1/2-13 x 1-1/4", Hex, Gr. 5
19	06-0820-8		Washer, 1/2", Rubber Seal
20	06-0841-4		Nut, 1/4-20, Hex
21	06-1580-7	11-8405-0	Screw, 1/4-20 x 1, Hex, Stainless Steel
22	06-2418-9		Nut, 1/2-13, Lock
23	06-3091-3		Shield, Collector Ring
24	06-3658-9		Screw, 3/8-16 x 2-1/4", Hex, Gr.5
25	06-3890-8		Clamp, Conduit Support, 1/2"
26	09-0838-4		Connector, 3/4", w/Nut, .7-8" Dia.
27	11-0046-0		Decal, "Grease"
28	11-0470-2	Note 2	Zerk, 5/16", Drive-In
29	11-3279-4	Note 1	Ring, Shutdown Clamp
30	66-0640-4		Clamp, Ringlock, 8" Steel Coupler
31	66-1070-3		Gasket, Round Back
32	66-2249-2		Elbow, Steel, 8" x 90°
33	11-6659-4		Riser Weldment, 8", Mid-Size
34	11-7301-2	Note 2	Tool, 5/16" Drive-in Zerk (not shown)
35	14-8496-0		Ring Assy, Coll., 10 Wire, CE
36	15-1028-0		Elbow, Weldment, Pivot, 8-5/8"

NOTE 1: 11-3279-4 is required when pivot application requires auto-reverse or stop using kit 10-0233-6.

NOTE 2: Should it become necessary to replace grease zerk 11-0470-2 (Item 28), the portion outside the pipe can be sheared off with a chisel. Drill out the hole using a 5/16" drill bit. Installing the new zerk requires a special tool. This tool is available under Part #11-7301-2 (Item 34).